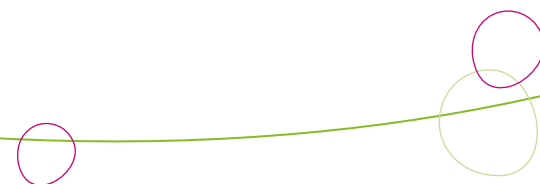
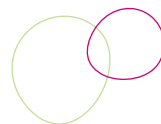


Overview

Keep classrooms clutter-free and integrate both storage and resources with our TeachingWall. Tailored to suit your exact requirements, we offer both modular and bespoke systems. TeachingWall not only houses a Smartboard or screen, but also offers sliding whiteboards, high and low level locking cupboards, tray storage and workspace, all with a small footprint to maximise the use of your space.



TeachingWall ®



Lockable

Overhead Cupboard

600mm(H) x 498mm(D) x 1025mm(W)
OHC001



Lockable

Teacher's Desk Cupboard

600mm(H) x 323mm(D) x 1025mm(W)
OHTC001



Quadrant Storage Unit

1300mm(H) x 400mm(D) x 957mm(W)
QUAD001



Lockable

Tall Cupboard

1480mm(H) x 380mm(D) x 1048mm(W)
TALCU001



Sliding Whiteboard

1310mm(H) x 25mm(D) x 1030mm(W)
SLWB001



Lockable

Base Combi-Unit with Trays

750mm(H) x 494mm(D) x 1048mm(W)
CTU7001
7 trays per column, doors available



Lockable

Base Single/Double Cupboard

750mm(H) x 494mm(D) x
500mm/1025mm(W)
BASC001/BADC001



Pull-Out Desk

25mm(H) x 400mm(D) x 981mm(W)
PODE001



Teacher's Desk

750mm(H) x 500mm(D) x 1200mm(W)
TEDE001



Media Unit

1300mm(H) x 500mm(D) x 2150mm(W)
MEUN001

Finishes



Call today for a FREE design consultation!

Call us today to arrange a personalised FREE design visit on 01604 755954, email us at library@fggroup.co.uk or visit our website www.fglibrary.co.uk for information.