

## Château - Product information

Hopsack upholstery fabric Chateau, comprises cross-colours and plain shades which work together to create a contemporary look for task chairs. It's extremely durable and the zesty colour palette will maintain its vibrancy over time.

<b>UK</b>	<b>ES</b>
<b>Composition</b> 100% Flame Retardant Polypropylene	<b>Composición</b> 100% Polipropileno resistente al fuego flamma
<b>Width</b> 140cm minimum	<b>Áncho</b> 140cm mínimo
<b>Weight</b> 225g/m <sup>2</sup> ±5% (300g/lin.m ±5%)	<b>Peso</b> 225g/m <sup>2</sup> ±5% (300g/lin.m ±5%)
<b>Abrasion Resistance</b> Severe contract / 10 year guarantee >30,000 Martindale cycles (tested at intervals)	<b>Resistencia a la abrasión</b> Trato severo / 10 años de garantía >30,000 ciclos Martindale (testado a intervalos)
<b>Flammability</b> EN 1021 - 1 (cigarette) EN 1021 - 2 (match) BS 7176 Low Hazard ÓNORM A 3800 DIN 4102 B1 UNI 8456, UNI 9174 & UNI 9177 Classe 1 <i>Note: Flammability performance is dependant on foam used.</i>	<b>Inflamabilidad</b> EN 1021 - 1 (cigarillo) EN 1021 - 2 (cerilla) BS 7176 Low Hazard ÓNORM A 3800 DIN 4102 B1 UNI 8456, UNI 9174 & UNI 9177 Classe 1 <i>Condiciones ignifugas dependientes del tipo de foam utilizado.</i>
<b>Light Fastness</b> 6 (ISO 105 - B02)	<b>Solidez a la luz</b> 6 (ISO 105 - B02)
<b>Fastness to Rubbing</b> Wet: 4, Dry: 4 (ISO 105 - X12)	<b>Solidez al rozamiento</b> Húmedo: 4, Seco: 4 (ISO 105 - X12)
<b>Cleaning</b> Vacuum regularly. Wipe clean with a damp cloth or shampoo using proprietary upholstery shampoo.	<b>Limpieza</b> Limpiar con aspiradora frecuentemente. Bien lavar con un paño húmedo o con un champú apropiado para tapicería.

## Technical information

<b>UK</b>	<b>D</b>	<b>F</b>	<b>ES</b>
<b>Composition</b> 100% Flame Retardant Polypropylene	<b>Zusammensetzung</b> 100% schwerenflammbare Polypropylene	<b>Composition</b> 100% Polypropylène retardateur de flamme	<b>Composición</b> 100% Polipropileno resistente al fuego flamma
<b>Width</b> 140cm minimum	<b>Breite</b> 140cm nutzbare Breite	<b>Largeur</b> 140cm minimum	<b>Áncho</b> 140cm mínimo
<b>Weight</b> 225g/m <sup>2</sup> ±5% (300g/lin.m ±5%)	<b>Gewicht</b> 225g/m <sup>2</sup> ±5% (300g/lfd.M ±5%)	<b>Poids</b> 225g/m <sup>2</sup> ±5% (300g/m.l ±5%)	<b>Peso</b> 225g/m <sup>2</sup> ±5% (300g/lin.m ±5%)
<b>Abrasion Resistance</b> Severe contract / 10 year guarantee >30,000 Martindale cycles (tested at intervals)	<b>Scheuerfestigkeit</b> Hochstrapazierfähig / 10 Jahre Garantie >30,000 Scheuertouren nach Martindale (in Intervallen getestet)	<b>Résistance à l'abrasion</b> Usage intense / Garantie 10 ans >30,000 cycles Martindale (testé par intervalle)	<b>Resistencia a la abrasión</b> Trato severo / 10 años de garantía >30,000 ciclos Martindale (testado a intervalos)
<b>Flammability</b> EN 1021 - 1 (cigarette) EN 1021 - 2 (match) BS 7176 Low Hazard ÓNORM A 3800 DIN 4102 B1 UNI 8456, UNI 9174 & UNI 9177 Classe 1 <i>Note: Flammability performance is dependant on foam used.</i>	<b>Feuersicherung</b> EN 1021 - 1 (Zigarettestest) EN 1021 - 2 (Streichholztest) BS 7176 Low Hazard ÓNORM A 3800 DIN 4102 B1 UNI 8456, UNI 9174 & UNI 9177 Classe 1 <i>Bemerkung: Schwerentflammbarkeit hängt von verwendetem Schaum ab.</i>	<b>Flammabilité</b> EN 1021 - 1 (cigarette) EN 1021 - 2 (allumette) BS 7176 Low Hazard ÓNORM A 3800 DIN 4102 B1 UNI 8456, UNI 9174 & UNI 9177 Classe 1 <i>Notez: Réaction au feu dépend de la mousse utilisée.</i>	<b>Inflamabilidad</b> EN 1021 - 1 (cigarillo) EN 1021 - 2 (cerilla) BS 7176 Low Hazard ÓNORM A 3800 DIN 4102 B1 UNI 8456, UNI 9174 & UNI 9177 Classe 1 <i>Condiciones ignifugas dependientes del tipo de foam utilizado.</i>
<b>Light Fastness</b> 6 (ISO 105 - B02)	<b>Lichtechtheit</b> 6 (ISO 105 - B02)	<b>Solidité à la lumière</b> 6 (ISO 105 - B02)	<b>Solidez a la luz</b> 6 (ISO 105 - B02)
<b>Fastness to Rubbing</b> Wet: 4, Dry: 4 (ISO 105 - X12)	<b>Reißebechttheit</b> Nass: 4, Trocken: 4 (ISO 105 - X12)	<b>Solidité au Frottement</b> Mouillé: 4, Sec: 4 (ISO 105 - X12)	<b>Solidez al rozamiento</b> Húmedo: 4, Seco: 4 (ISO 105 - X12)
<b>Cleaning</b> Vacuum regularly. Wipe clean with a damp cloth or shampoo using proprietary upholstery shampoo.	<b>Reinigung</b> Regelmässig staubsaugen. Dazu mit einem feuchten Tuch abwischen, oder mit einem speziellen Polsterschaum behandeln.	<b>Nettoyage</b> Aspirer régulièrement. Essuyer avec une étoffe humide ou nettoyer à l'aide d'un produit approprié pour tissus d'ameublement.	<b>Limpieza</b> Limpiar con aspiradora frecuentemente. Bien lavar con un paño húmedo o con un champú apropiado para tapicería.

\*Why go round in circles with numbers? Camira recognise that the number of Martindale cycles does not reflect the actual wear performance of fabrics. We're so confident in the durability of our products that we provide a robust 10 year guarantee (full details available). This range is externally certified, details of which are on our website and available from our customer services team.

Please note that seam performance is dependent on seam construction and needle and thread type. We recommend that appropriate sewing advice be taken.

Batch to batch variations in shade may occur within commercial tolerances. We reserve the right to alter technical specifications without notice. The Unregistered Design Rights and the Copyright in all designs are the exclusive property of Camira Fabrics Limited.

Eine optimale Nahtausreissfestigkeit hängt von der Nahtfahne, der verwendeten Nadel und dem Näh-Garn ab. Wir empfehlen daher Nähversuche durchzuführen.

Handelsübliche Farbabweichungen können auftreten und berechtigen nicht zur Reklamation. Wir behalten uns die Änderung technischer Spezifikationen vor. Die registrierten und nicht registrierten Urheberrechte der Dessinierungen sind ausschliessliches Eigentum der Camira Fabrics Limited.

<b>Contact</b>	
UK Head Office:	+44 (0)1924 490491
Belgium/France:	+32 56 227 266
Germany:	+49 7031 60 84 30
Netherlands:	+31 7361 25120
Scandinavia:	+45 32 55 20 01
USA:	+1 616 288 0655
China:	+86 (0) 21 6133 1812

[www.camirafabrics.com](http://www.camirafabrics.com)



# camira

[www.camirafabrics.com](http://www.camirafabrics.com)

style with substance

# Château



Task seating



Cigarette & Match



B1



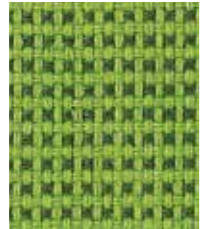
Year guarantee



**Chantilly**  
CSP28



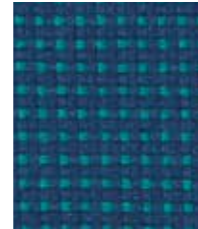
**Rideau**  
CSP33



**Tarascon**  
CSP29



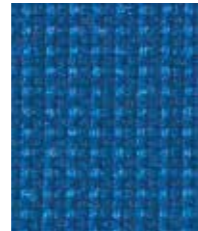
**Motte**  
CSP14



**Biron**  
CSP15



**Vincennes**  
CSP31



**Chinon**  
CSP09



**Martet**  
CSP42



**Touvet**  
CSP12



**Divonne**  
CSP47



**Bonpas**  
CSP11



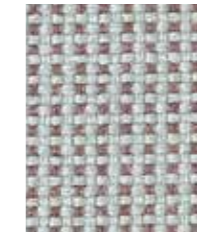
**Bellay**  
CSP51



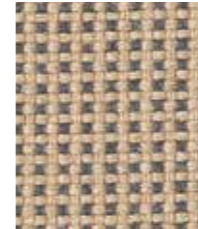
**Dollard**  
CSP07



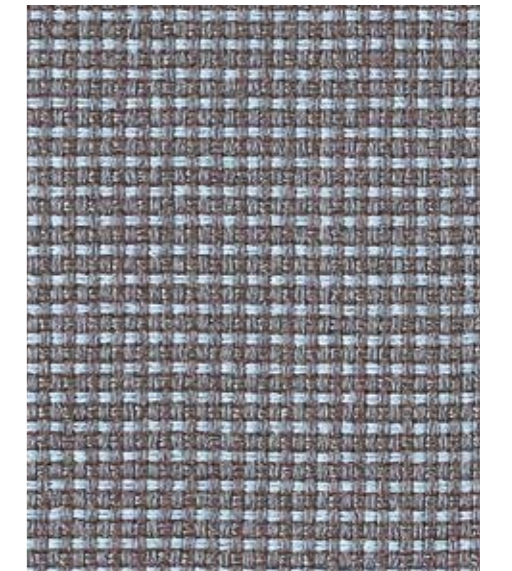
**Mombet**  
CSP23



**Losse**  
CSP36



**Pomerol**  
CSP01



**Perigord**  
CSP38



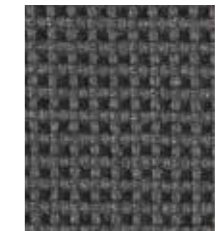
**Medoc**  
CSP02



**Belcaire**  
CSP43



**Brissac**  
CSP03



**Palice**  
CSP19



**Hazeville**  
CSP20



**Noizac**  
CSP04



**Trianons**  
CSP39



**Beauvois**  
CSP48

**Note:**

• Highlighted shades are available from stock. Other colourways are available in 10 - 15 working days.

Photographic fabric scans are not colour accurate. Always request actual fabric samples before ordering.